

type number: **KOPOBOX 80**

product description: Designated for installation into the universal floor box KUP 80 or to double floor.

Minimum height of double floor for installation is 78 mm. Suited thickness of the floor is from 10 to 40 mm. The proposition of hole to insert the floor box is 218x288 mm.

Use of apparatus boxes KPP 80 (max. 2 pcs) with cover plates for apparatuses PP 80/3 it enables the assembly of classic apparatuses (max. 6 pcs), with the cover plates PP 80/45 it enables the assembly of modular apparatuses (max. 8 pcs).

The sheet metal reinforcement of the cover ensures its high mechanical rigidity while maintaining the possibility of inserting the final floor covering.

The cover has 2 tilt flaps enabling the leading out of cables from the box.

The package includes bolts for attaching the frame to the floor box KUP 80.

KOPOBOX is standardly delivered in dark gray color. With an order of above 500 pcs it is possible to deliver a different color according to the color card RAL (does not apply for the apparatus boxes).

material: polyamide

color: gray RAL 7012

self-snuffing: yes, within 30 s

temperature resistance: -5 - +105 °C

flaming loop test: 850 °C

fire class for underlying material: A1-F

protection types: IP 30

max. load: 150 kg

konfigurace: LB - dark gray color

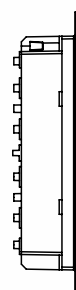
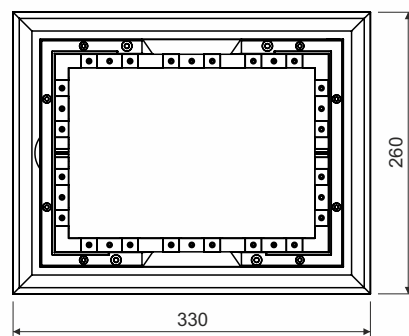
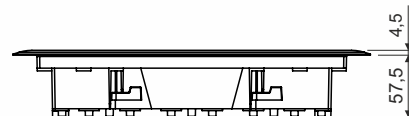
sales amount: á 1 pc

certification: EN 60607-1

storage: ČSN 64 0090

accessories: floor box KUP 57 or KUP 80
modular sockets QP 45X45, QS 45X45 or QD 45X22.5

accessories: floor box KUP 57 or KUP 80
instrument floor box KPP 80
instrument underlay PP 80/0, PP 80/3, PP 80/45
instrument underlay PP 80/45/6
modular sockets QP 45X45, QS 45X45 or QD 45X22.5



KOPOBOX 80 - floor box assembly for 6 classic or 8 modular devices

Use in concrete floor

The complete set of the floor box composed of KOPOBOX 80 and KUP 80 is designated for the installation of classic and also modular devices. The selection of the type of devices being installed is given by the type of the devices underlay. The mounting feet (designed for doubled floors) are not used during the installation of the box KOPOBOX 80 into KUP 80.

Installation box KUP 80 is suitable for the concrete layers from 80 mm up to 95 mm. There is necessary to fix the installation box on the background surface. The height of the box can be adjusted by raising of insertion in range from 80 up to 95 mm with screws.

In case of concrete layer higher than 95 mm there is necessary to use and levelling set SN (4 pcs) anchored to the surface. The leveling set enable to increase the height of the box for concreting by up to 35 mm.

Universal KUP boxes are designed for installation of electrical pipes or floor ducts PUK 38X150 S1. Every single input together with raising insertion for height setting must be sealed to avoid breaking the concrete into the box.

During placement of concrete it is necessary to use and cover board (included KUP 80) to prevent the box from being filled with concrete. After the concrete mix hardens and the cover board is removed the floor box KUP 80 is fitted with and frame of the floor box KOPOBOX 80. Subsequently the instrument boxes KPP 80 are inserted to the frame. On the base of installed apparatus, PP 80 instrument underlay should be used.

Modular devices (max. 8 modular devices 45x45):

- installation into KPP 80 + PP 80/45,
- installation directly on PP 80/45, while using the cross-piece PKUP.

Classic devices (max. 6 classic devices):

- installation into KPP 80 + PP 80/3 for the non-fitted assembly openings use the end cap ZPP.

KOPOBOX 80 is mainly designed for cables with indirect plugs. Use of cables with direct plugs is limited and use of adapters and chargers is limited.

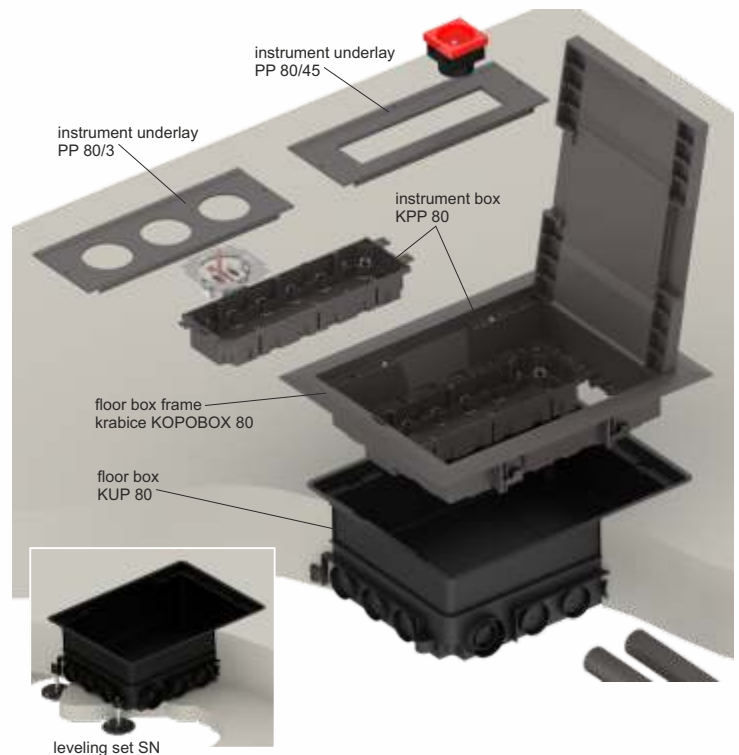
It is possible to install QUADRO modular instruments in the system, or instruments with compatible construction, e.g. those made by ABB, PEHA, Legrand, OBO Bettermann, Schneider Electric Altira.

The cover of the frame is determined for floor covering with highest layer of 7 mm. Considering IP30, the box is not suitable to be moistened with the floor cleaning machines. Recommended floor covering are carpets or floating wooden floors.

The system are designed for distribution system with voltage 500 V.

Floor boxes KOPOBOX are designed for a maximum load of 1500 N.

See assembly video at www.kopos.com



Use in double floor

KOPOBOX 80 enables installation of classic and also modular apparatuses (the selection is performed by suitable selection of the cover plate for apparatus), however it is possible to use the frame already from a floor depth of 78 mm. For the frame KOPOBOX 80 it is necessary to order the cover plates for apparatus according to the selected types of apparatuses.

The paper template in the frame package is used for the marking and subsequent cutting out of the opening in the floor. The inner perforated template enables the cutting out of the flooring into the frame cover. The inserted frame is secured by turning the feet bolts, until the feet firmly grip the frame to the floor. The KPP 80 box with the relevant broken off cable passages is then inserted into the frame, the cables are secured against mechanical stressing using the straps (part of the package).

The KPP 80 box is then mounted with the cover plates for apparatus according to the selected types of apparatuses, and the connecting of the apparatuses is performed.

The cover of the frame is determined for floor covering with highest layer of 7 mm. Considering IP30, the box is not suitable to be moistened with the floor cleaning machines. Recommended floor covering are carpets or floating wooden floors.

Modular devices (max. 8 modular devices 45x45):

- installation into KPP 80 + PP 80/45,
- installation directly on PP 80/45, while using the cross-piece PKUP.

Classic devices (max. 6 classic devices):

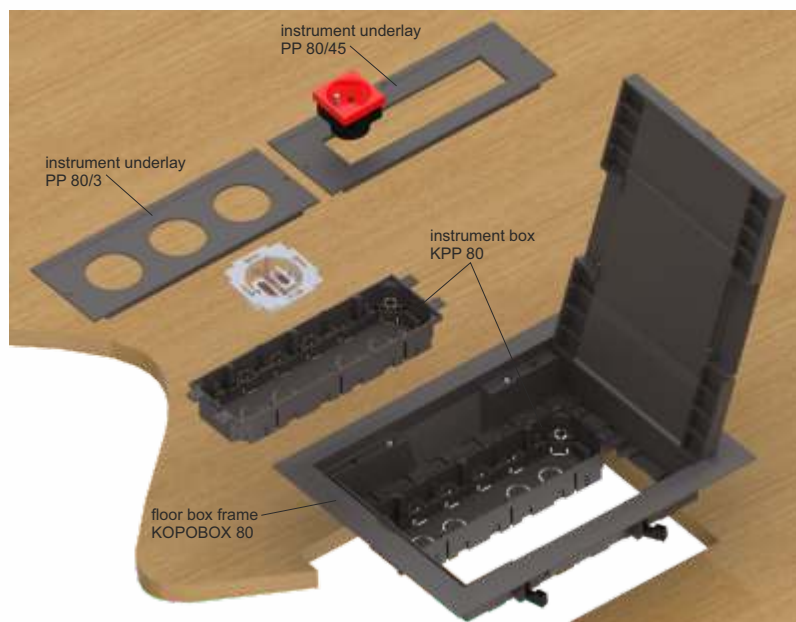
- installation into KPP 80 + PP 80/3 for the non-fitted assembly openings use the end cap ZPP.

KOPOBOX 80 is mainly designed for cables with indirect plugs. Use of cables with direct plugs is limited and use of adapters and chargers is limited.

It is possible to install QUADRO modular instruments in the system, or instruments with compatible construction, e.g. those made by ABB, PEHA, Legrand, OBO Bettermann, Schneider Electric Altira.

The system are designed for distribution system with voltage 500 V.

Floor boxes KOPOBOX are designed for a maximum load of 1500 N.



KOPOBOX 80 - floor box assembly for 12 modular devices

Use in concrete floor

The complete set of the floor box composed of KOPOBOX 80 and KUP 80 is designated for the installation of classic and also modular devices 45x45. The mounting feet (designed for doubled floors) are not used during the installation of the box KOPOBOX 80 into KUP 80.

Installation box KUP 80 is suitable for the concrete layers from 80 mm up to 95 mm. There is necessary to fix the installation box on the background surface. The height of the box can be adjusted by raising of insertion in range from 80 up to 95 mm with screws.

In case of concrete layer higher than 95 mm there is necessary to use and levelling set SN (4 pcs) anchored to the surface. The leveling set enable to increase the height of the box for concreting by up to 35 mm.

Universal KUP boxes are designed for installation of electrical pipes or floor ducts PUK 38X150 S1. Every single input together with raising insertion for height setting must be sealed to avoid breaking the concrete into the box.

During placement of concrete it is necessary to use and cover board (included KUP 80) to prevent the box from being filled with concrete. After the concrete mix hardens and the cover board is removed the floor box KUP 80 is fitted with and frame of the floor box KOPOBOX 80. Afterwards, the PP 80/45/6 (max. 2 pieces) instrument washers are installed in the frame for the installation of modular devices 45x45 (max. 12 modules).

KOPOBOX 80 is mainly designed for cables with indirect plugs. Use of cables with direct plugs is limited and use of adapters and chargers is limited.

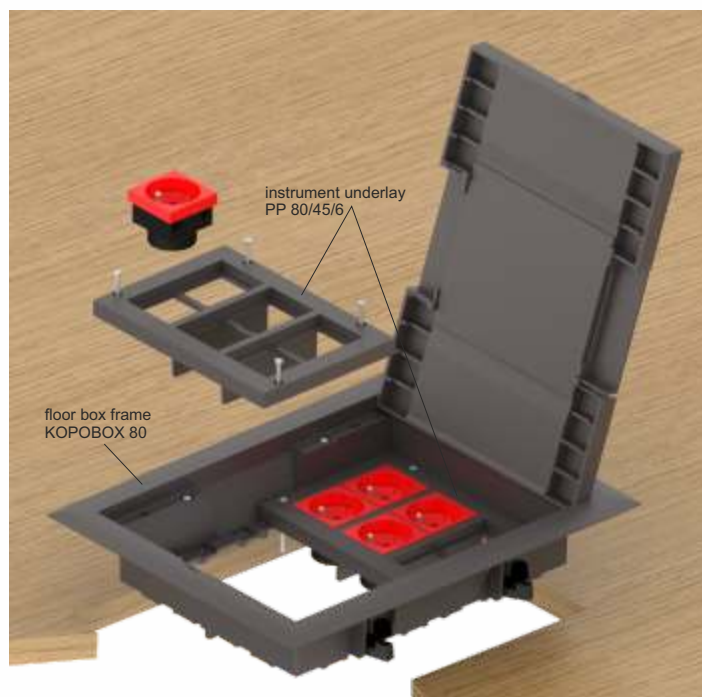
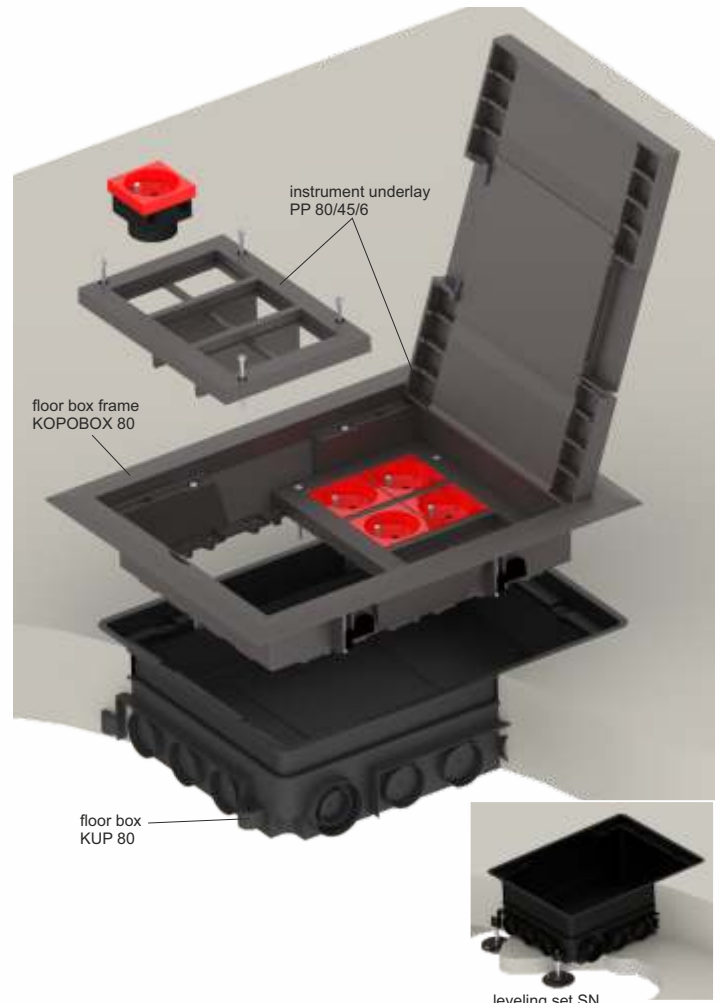
It is possible to install QUADRO modular instruments in the system, or instruments with compatible construction, e.g. those made by ABB, PEHA, Legrand, OBO Bettermann, Schneider Electric Altira.

The cover of the frame is determined for floor covering with highest layer of 7 mm. Considering IP30, the box is not suitable to be moistened with the floor cleaning machines. Recommended floor covering are carpets or floating wooden floors.

The system are designed for distribution system with voltage 500 V.

Floor boxes KOPOBOX are designed for a maximum load of 1500 N.

See assembly video at www.kopos.com



Use in double floor

The KOPOBOX 80 floor box and PP 80/45/6 instrument washers are designed to install modular 45x45 devices. The assembly can be used from the floor depth of 78 mm.

The paper template in the frame package is used for the marking and subsequent cutting out of the opening in the floor. The inner perforated template enables the cutting out of the flooring into the frame cover.

The frame is inserted into the floor opening and secured by turning the flap screws until the flaps firmly press the frame to the floor. Afterwards, the PP 80/45/6 (max. 2 pieces) instrument washers are installed in the frame for the installation of modular devices 45x45 (max. 12 modules).

KOPOBOX 80 is mainly designed for cables with indirect plugs. Use of cables with direct plugs is limited and use of adapters and chargers is limited.

It is possible to install QUADRO modular instruments in the system, or instruments with compatible construction, e.g. those made by ABB, PEHA, Legrand, OBO Bettermann, Schneider Electric Altira.

The cover of the frame is determined for floor covering with highest layer of 7 mm. Considering IP30, the box is not suitable to be moistened with the floor cleaning machines. Recommended floor covering are carpets or floating wooden floors.

The system are designed for distribution system with voltage 500 V.

Floor boxes KOPOBOX are designed for a maximum load of 1500 N.